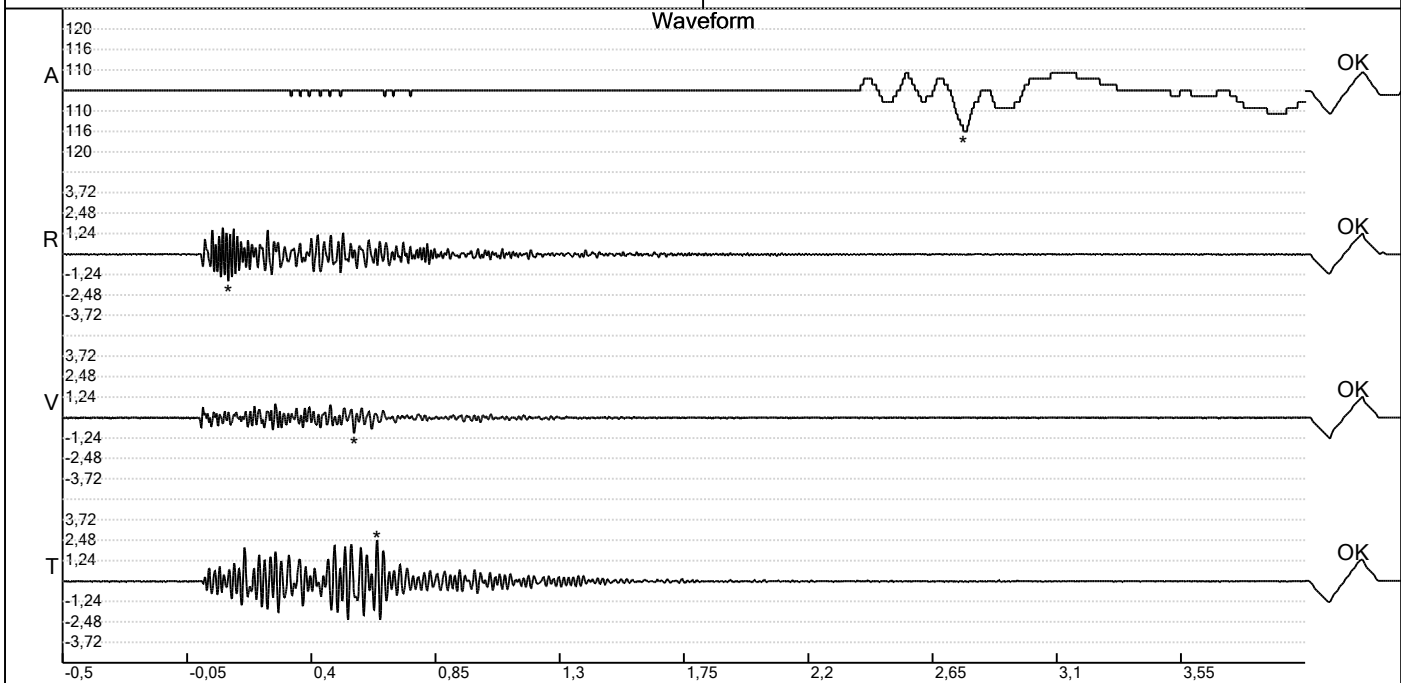


Carrière de BRS
 Fraiture -5
 Tir du 22/08/2022
 Sismographe placé au
 261 Halleux
 4710 Comblain-au-Pont

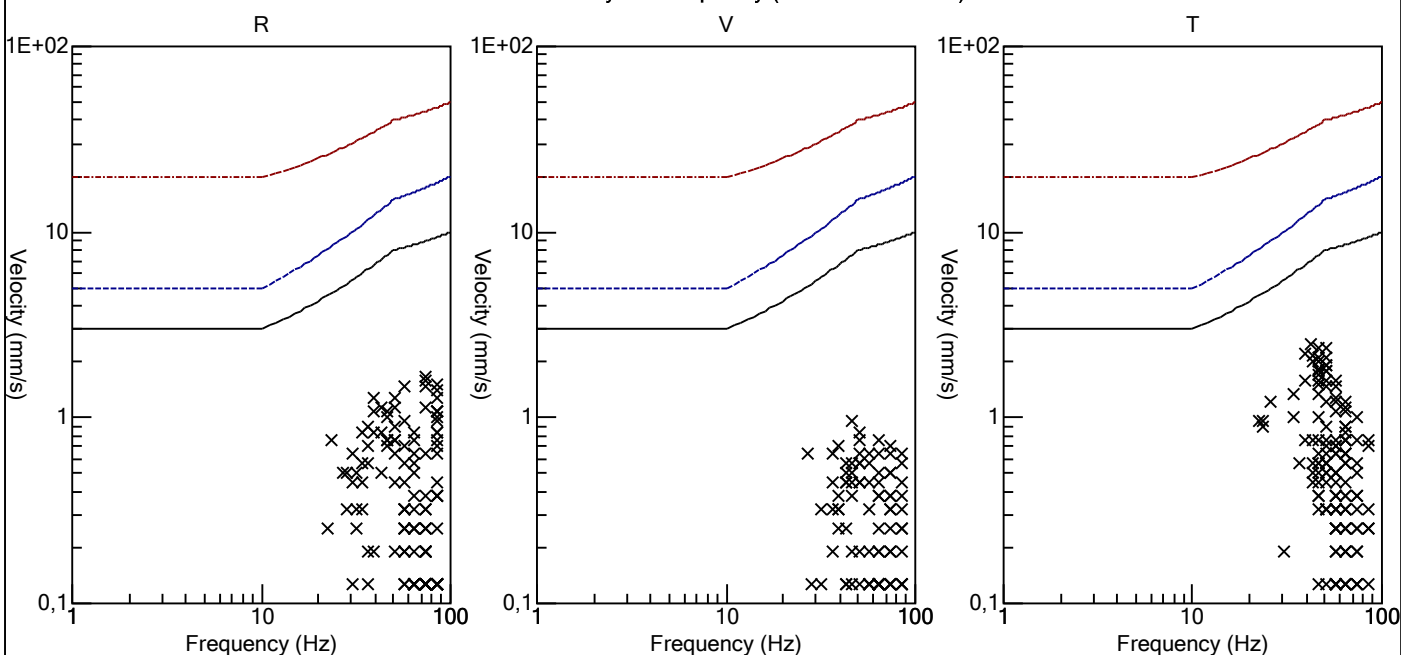
Record: 1789202208221502322.dtb
 Number: 322
 Seismograph: Mini-Seis 1789
 Type of Record: Waveform
 Date: 22-08-22 15:02:00
 Duration: 4,50 Seconds
 Sample Rate: 1024
 Pre-Trigger: 0,5 Seconds
 Seismic Trigger: 0,508 mm/s
 Acoustic Trigger: 142,1 dB
 Seismic Gain: 63,5
 Acoustic Gain: 141,9 dB
 Voltage: 6,6

Peaks and Frequencies
 PPV Maximum (Geo #1): 2,48 mm/s
 Acoustic #1: 116,9 dB @ 4,9 Hz (2,761719 s)
 Radial #1: 1,65 mm/s @ 73,1 Hz (0,09960938 s)
 Vertical #1: 0,953 mm/s @ 46,5 Hz (0,5546875 s)
 Transverse #1: 2,48 mm/s @ 42,6 Hz (0,6376953 s)
 Last Calibration Date: 03-12-21

Graph Information
 Time Range: -0,5 s to 4 s, Intervals: 0,4500 Seconds



Velocity vs. Frequency (DIN 4150-3 Tab 1)

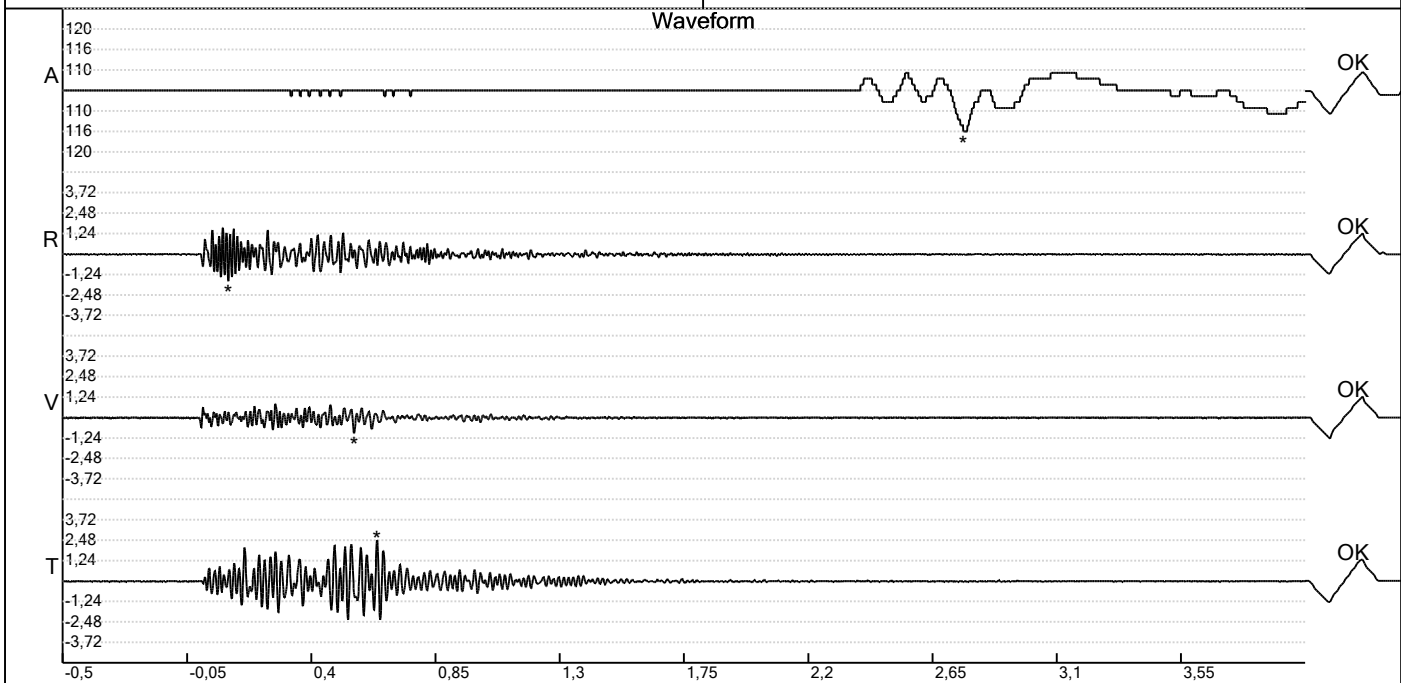


Carrière de BRS
 Fraiture -5
 Tir du 22/08/2022
 Sismographe placé au
 261 Halleux
 4710 Comblain-au-Pont

Record: 1789202208221502322.dtb
 Number: 322
 Seismograph: Mini-Seis 1789
 Type of Record: Waveform
 Date: 22-08-22 15:02:00
 Duration: 4,50 Seconds
 Sample Rate: 1024
 Pre-Trigger: 0,5 Seconds
 Seismic Trigger: 0,508 mm/s
 Acoustic Trigger: 142,1 dB
 Seismic Gain: 63,5
 Acoustic Gain: 141,9 dB
 Voltage: 6,6

Peaks and Frequencies
 PPV Maximum (Geo #1): 2,48 mm/s
 Acoustic #1: 116,9 dB @ 4,9 Hz (2,761719 s)
 Radial #1: 1,65 mm/s @ 73,1 Hz (0,09960938 s)
 Vertical #1: 0,953 mm/s @ 46,5 Hz (0,5546875 s)
 Transverse #1: 2,48 mm/s @ 42,6 Hz (0,6376953 s)
 Last Calibration Date: 03-12-21

Graph Information
 Time Range: -0,5 s to 4 s, Intervals: 0,4500 Seconds



Fast Fourier Transform (Amplitude Spectrum)

